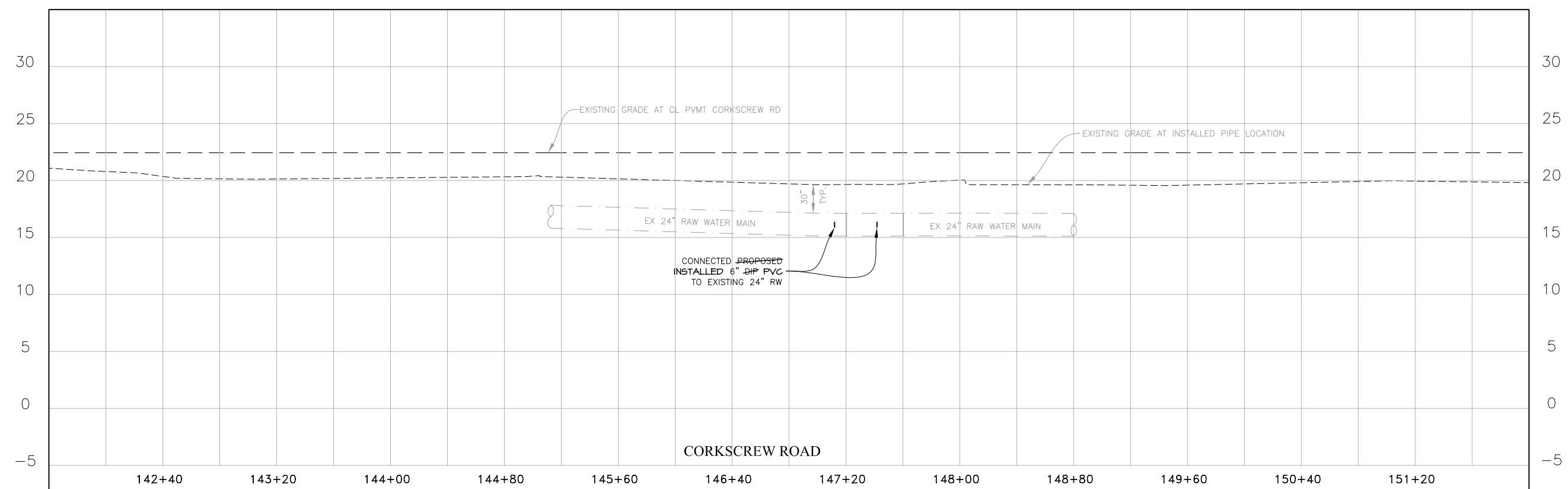


NOTE:
USE EXTREME CAUTION.
OVERHEAD POWER IN AREA.



SCALE 1" = 40' HOR
1" = 5' VER

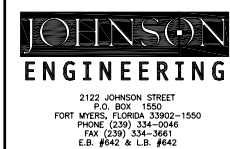
RECORD DRAWING

\\Ftms01\proj-jel\20033735\WaterMgmt\RECORD DRAWINGS\PP-CorkscrewW.dwg (PP 30) jwm Oct 06, 2009 - 8:30am

REVISIONS	



Corkscrew 5MGD Expansion
Lee County, Florida



ERIK LEE HOWARD, PE
FL License No. 66574

Plan and Profile - Corkscrew West Sta. 141+60 to Sta. 152+00				
DATE	PROJECT NO.	FILE NO.	SCALE	SHEET
MARCH, 2006	20033735	16-46-26	As Shown	PP 30