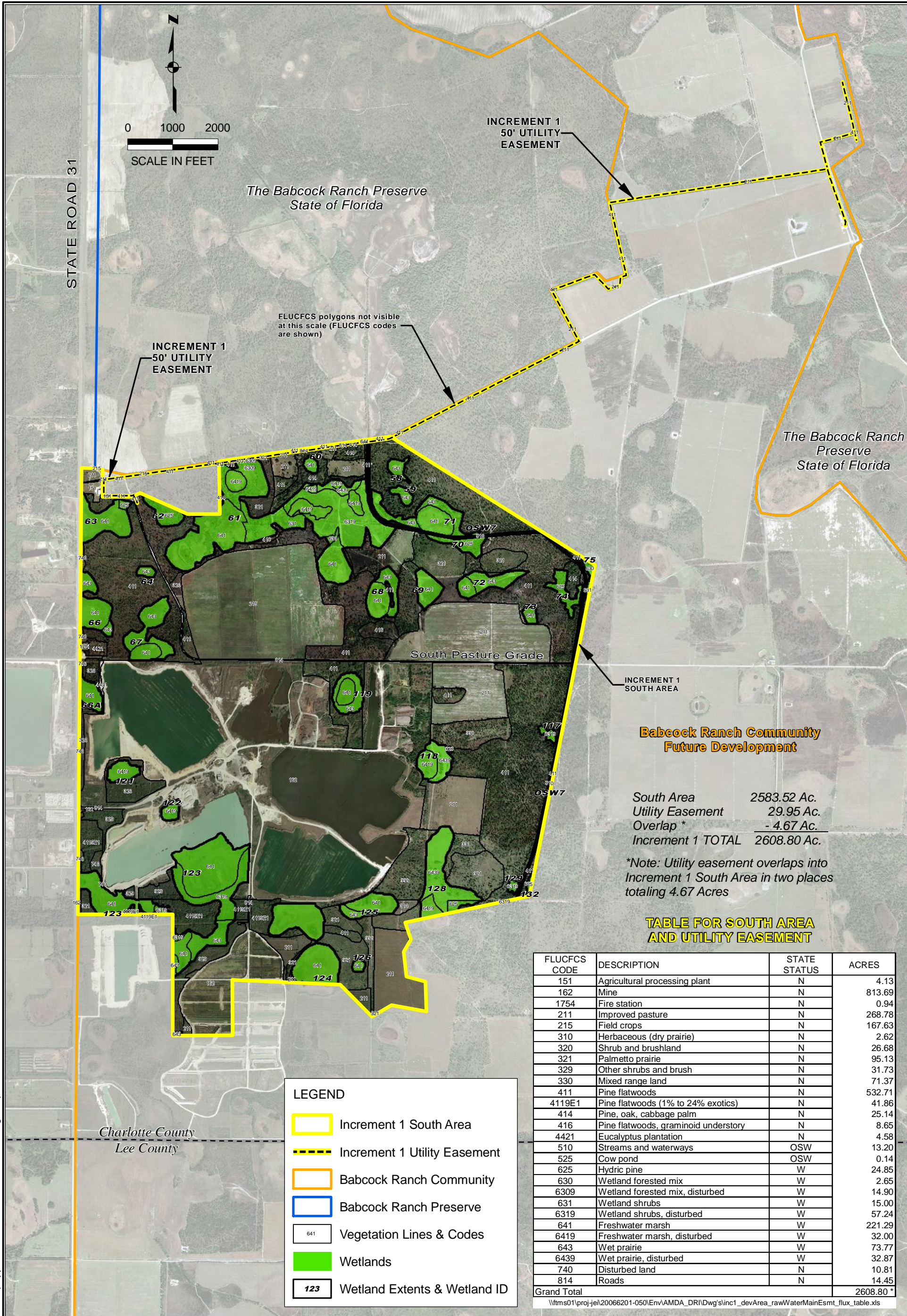


\\fms01\proj-jeh\20066201-050\Env\AMDA_DRID\wg\Map F1 FLUCFCSandWetlands.mxd



Babcock Ranch Community Future Development

South Area 2583.52 Ac.
 Utility Easement 29.95 Ac.
 Overlap * - 4.67 Ac.
 Increment 1 TOTAL 2608.80 Ac.

*Note: Utility easement overlaps into Increment 1 South Area in two places totaling 4.67 Acres

TABLE FOR SOUTH AREA AND UTILITY EASEMENT

FLUCFCS CODE	DESCRIPTION	STATE STATUS	ACRES
151	Agricultural processing plant	N	4.13
162	Mine	N	813.69
1754	Fire station	N	0.94
211	Improved pasture	N	268.78
215	Field crops	N	167.63
310	Herbaceous (dry prairie)	N	2.62
320	Shrub and brushland	N	26.68
321	Palmetto prairie	N	95.13
329	Other shrubs and brush	N	31.73
330	Mixed range land	N	71.37
411	Pine flatwoods	N	532.71
4119E1	Pine flatwoods (1% to 24% exotics)	N	41.86
414	Pine, oak, cabbage palm	N	25.14
416	Pine flatwoods, graminoid understory	N	8.65
4421	Eucalyptus plantation	N	4.58
510	Streams and waterways	OSW	13.20
525	Cow pond	OSW	0.14
625	Hydric pine	W	24.85
630	Wetland forested mix	W	2.65
6309	Wetland forested mix, disturbed	W	14.90
631	Wetland shrubs	W	15.00
6319	Wetland shrubs, disturbed	W	57.24
641	Freshwater marsh	W	221.29
6419	Freshwater marsh, disturbed	W	32.00
643	Wet prairie	W	73.77
6439	Wet prairie, disturbed	W	32.87
740	Disturbed land	N	10.81
814	Roads	N	14.45
Grand Total			2608.80 *

The Babcock Ranch Community
Charlotte County, Florida



2122 JOHNSON STREET
P.O. BOX 1550
FORT MYERS, FLORIDA 33902-1550
PHONE (239) 334-0046
FAX (239) 334-3661
E.B. #642 & L.B. #642

Increment 1 South Area
Vegetation Map

DATE	PROJECT NO.	FILE NO.	SCALE	SHEET
April 2009	20066201-050	---	AS SHOWN	MAP F1