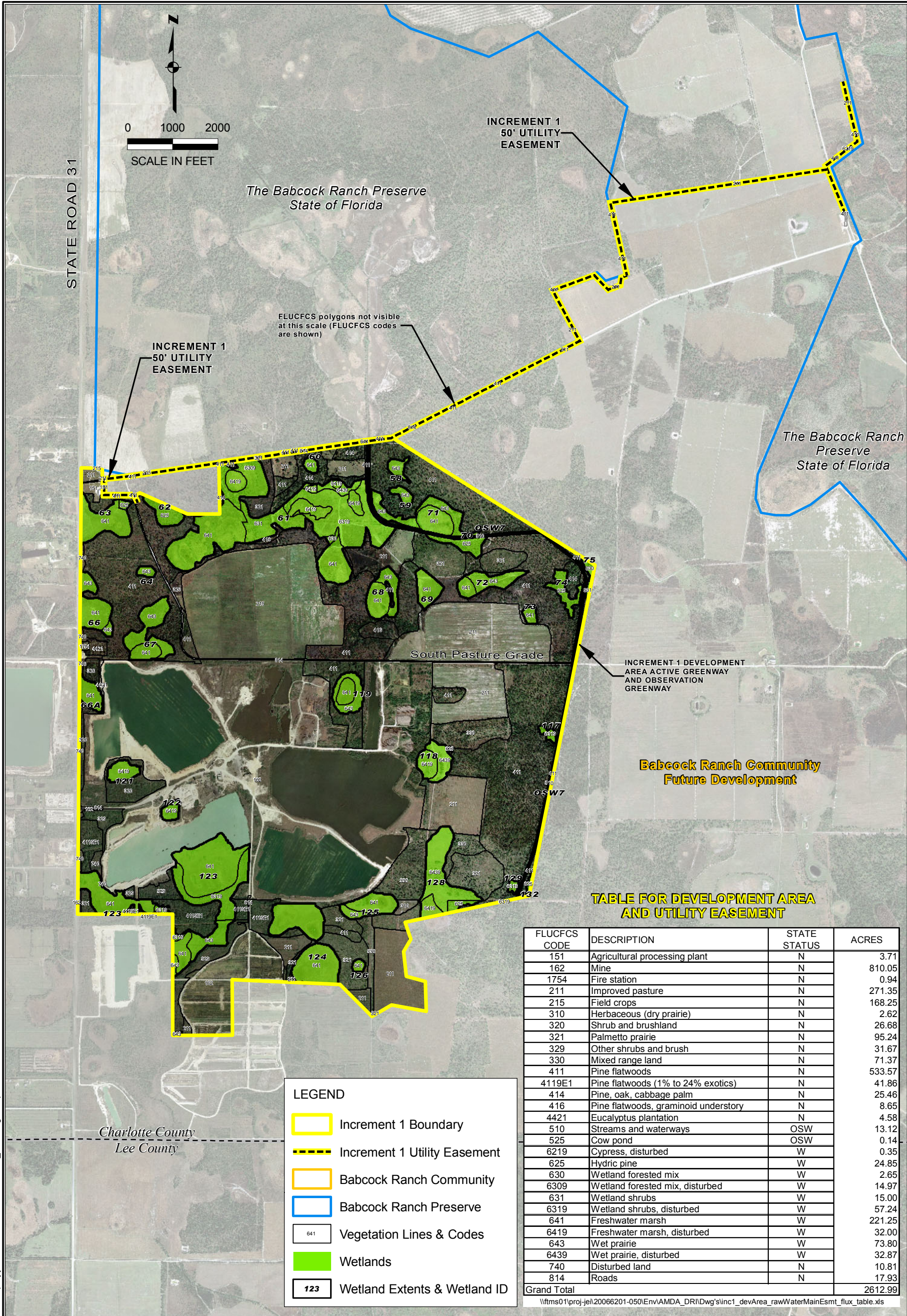


\\fms01\proj\jei\20066201-050\Env\AMDA\_DR\IDwg's\Map F1 FLUCFCSandWetlands.mxd



**TABLE FOR DEVELOPMENT AREA AND UTILITY EASEMENT**

FLUCFCS CODE	DESCRIPTION	STATE STATUS	ACRES
151	Agricultural processing plant	N	3.71
162	Mine	N	810.05
1754	Fire station	N	0.94
211	Improved pasture	N	271.35
215	Field crops	N	168.25
310	Herbaceous (dry prairie)	N	2.62
320	Shrub and brushland	N	26.68
321	Palmetto prairie	N	95.24
329	Other shrubs and brush	N	31.67
330	Mixed range land	N	71.37
411	Pine flatwoods	N	533.57
4119E1	Pine flatwoods (1% to 24% exotics)	N	41.86
414	Pine, oak, cabbage palm	N	25.46
416	Pine flatwoods, graminoid understory	N	8.65
4421	Eucalyptus plantation	N	4.58
510	Streams and waterways	OSW	13.12
525	Cow pond	OSW	0.14
6219	Cypress, disturbed	W	0.35
625	Hydric pine	W	24.85
630	Wetland forested mix	W	2.65
6309	Wetland forested mix, disturbed	W	14.97
631	Wetland shrubs	W	15.00
6319	Wetland shrubs, disturbed	W	57.24
641	Freshwater marsh	W	221.25
6419	Freshwater marsh, disturbed	W	32.00
643	Wet prairie	W	73.80
6439	Wet prairie, disturbed	W	32.87
740	Disturbed land	N	10.81
814	Roads	N	17.93
<b>Grand Total</b>			<b>2612.99</b>

**LEGEND**

- Increment 1 Boundary
- Increment 1 Utility Easement
- Babcock Ranch Community
- Babcock Ranch Preserve
- 641 Vegetation Lines & Codes
- Wetlands
- 123 Wetland Extents & Wetland ID

The Babcock Ranch Community  
Charlotte County, Florida



2122 JOHNSON STREET  
P.O. BOX 1550  
FORT MYERS, FLORIDA 33902-1550  
PHONE (239) 334-0046  
FAX (239) 334-3661  
E.B. #642 & L.B. #642

**Babcock Ranch Community - Increment 1  
Vegetation Map**

DATE	PROJECT NO.	FILE NO.	SCALE	SHEET
January 2009	20066201-050	---	AS SHOWN	MAP F1